

# N900 RDesktop User's Guide

## Introduction

With Remote Desktop you can connect from N900 to a Windows XP computer and access all of your programs, files and network resources as though you were actually sitting in front of your computer.

## System Requirements

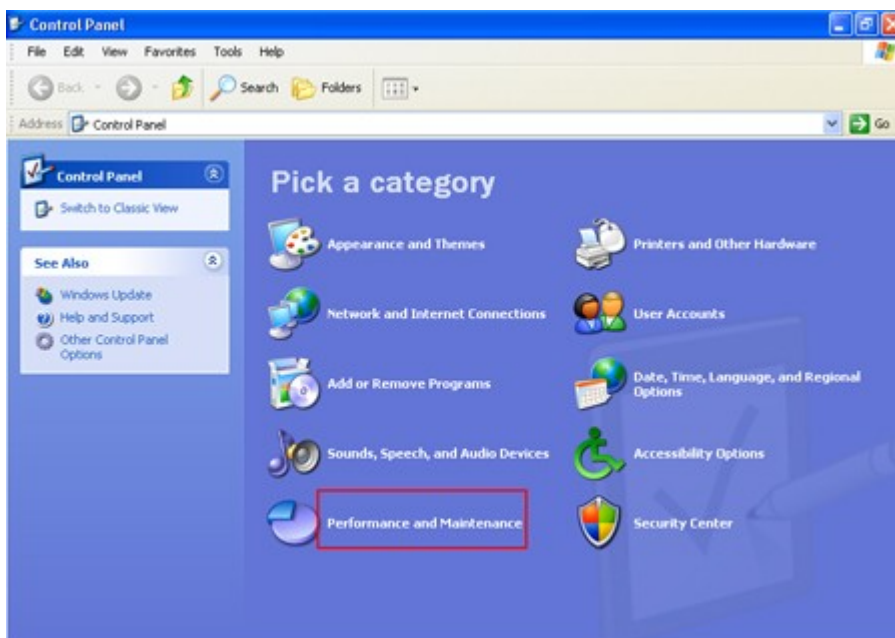
You need three things to use RDesktop

1. In N900 install RDesktop application.
2. Connect N900 to WLAN
3. Connect your laptop to LAN

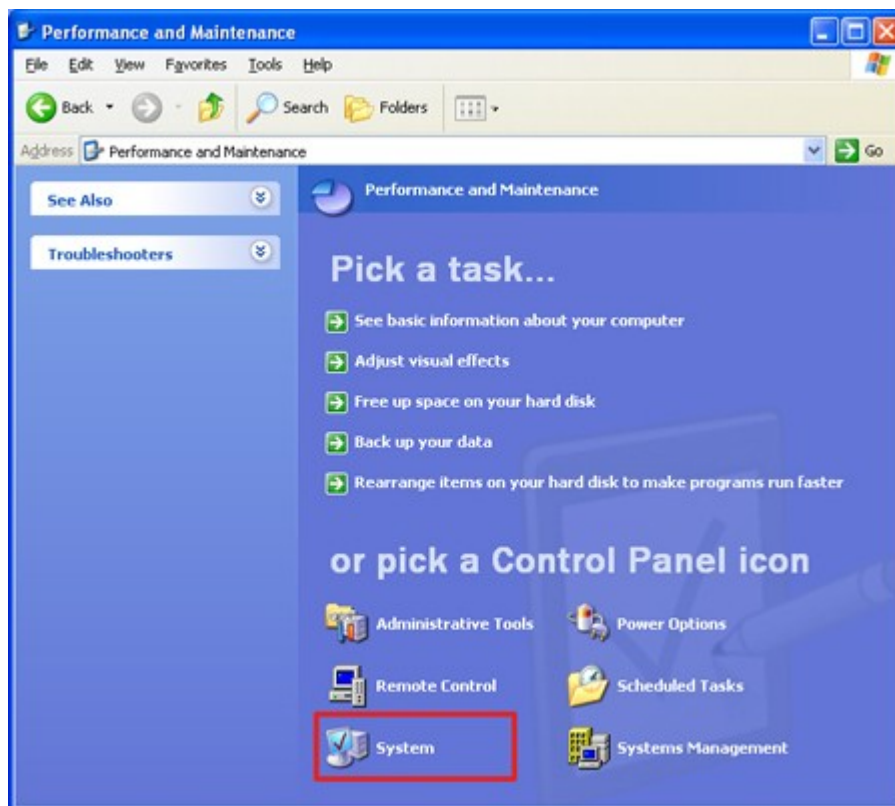
**Note:** These instructions are verified on Windows XP, Service pack 3

## Host computer configuration

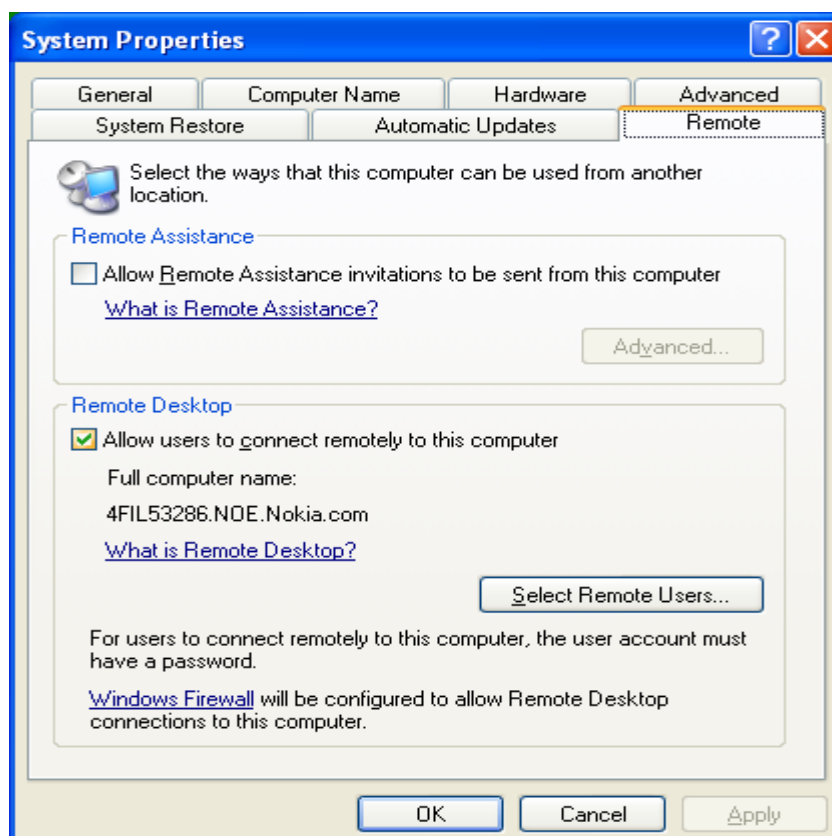
1. Verify that you are signed in as the administrator.
2. Click **Start**, click **Control Panel**, and then click **Performance and Maintenance**.



3. Click **System**.



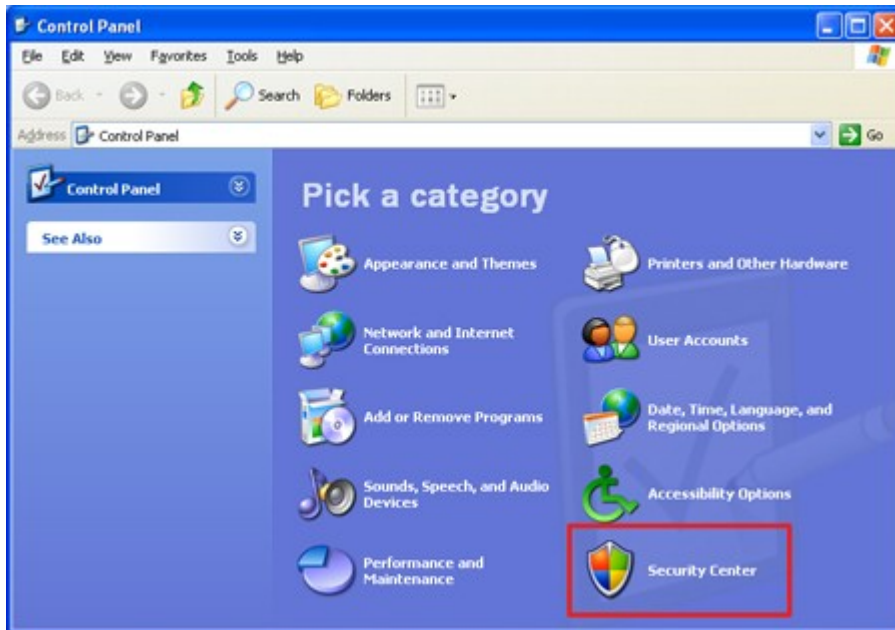
4. Click the **Remote** tab, select the **Allow users to connect remotely to this computer** check box, and then click **OK**.



## Windows Firewall configuration

On the host computer, the Windows Firewall must be configured to allow remote access.

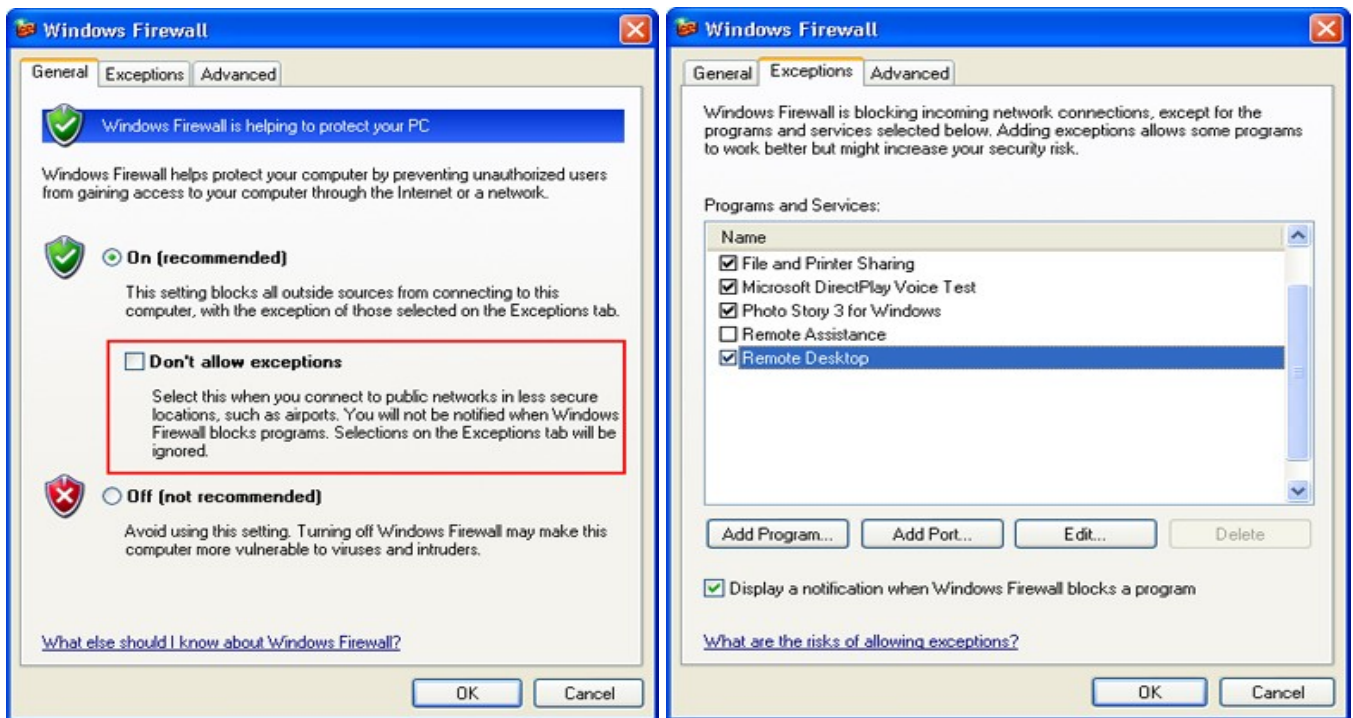
1. In the Control Panel, click **Security Center**.



2. Under **Manage security settings for**, click **Windows Firewall**.



3. Make sure the **Don't allow exceptions** check box is not selected.



4. Click the **Exceptions** tab, and verify that the **Remote Desktop** check box is selected.
  5. Click **OK**, and then close the Windows Security Center window.
- Your host computer is now set up to allow remote access.

## Using remote desktop application

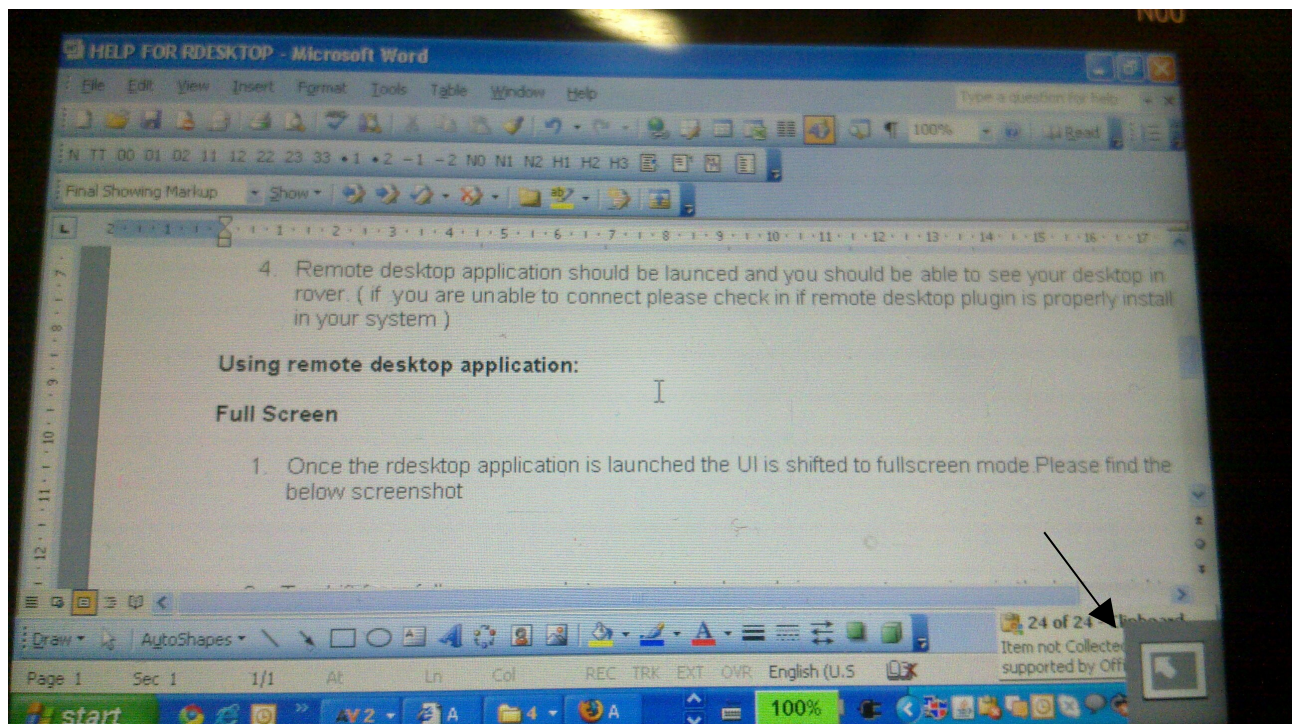
### Startup

1. On N900 start RDesktop application.
2. Enter hostname of your laptop or IP address and port numbe. Default port number is 3389.
3. Example: <ipaddress> :< port number> or <hostname> :< port number>.
4. Enter username and password.
5. Enter Domain.
6. Now start RDesktop application by tapping on ok button.
7. Remote desktop application should be launched and you should be able to see your desktop in the N900.

### Full Screen

1. Once the RDesktop application is launched the UI is shifted to fullscreen mode.
2. To shift from full screen mode to normal mode and viceversa tap on icon in the bottom right.









### Opening any file

1. Tap on any file / folder. Use enter key from hardware keyboard to open file / folder.


### Entering characters

1. User can enter the characters and numerals from hardware keyboard.

### Entering numerals

1. User should tap on  key (Fn key) to use numerals.  
For example
  - If user wants to type number, Press the  (Fn key) once and type the number.
2. Enabling the numeric mode  
If user wants enter numerals .Then we can enable the numeric mode .The steps are
  - Press  key twice. Numeric mode is activated.User can enter the numerics continuously.
3. Disabling numeric mode
  - If user is in numeric mode.Pressing  key again will disable the numeric mode.

### Entering Capital letters

1. To enter capitals, Press on the  (shift) key and any character.

### Text selection

1. To Select the text use shift key + Arrow keys


### Keyboard Shortcuts

1. All the Shortcuts which are applicable in windows environment related to CTRL, shift keys should work in the remote desktop application.

### Drag and Drop Operation

1. User can drag a file and drop in to desired folder by tap hold on file and drag it to the desired folder to be dropped.

### Right click Operation

1. To active the right click functionality tap on  (Fn key) + CTRL)
2. To deactivate right click functionality tap on 